

Landseer Close Colliers Wood, SW19 2UT

£350,000 Freehold

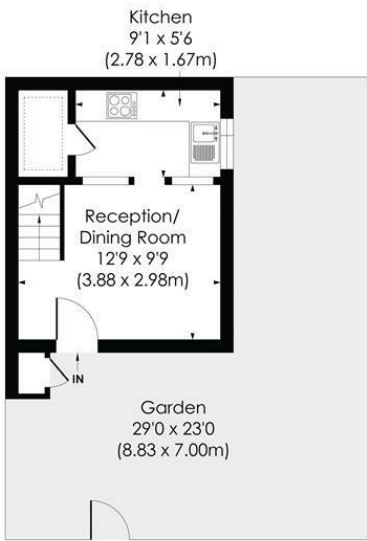


An end of terrace, one double bedroom Freehold house located on a popular modern development close to central Colliers Wood and Merton Abbey Mills. This property is being sold with no onward chain and further benefits from a private front/side garden. Ideal for the first time buyer and viewings are highly recommended.

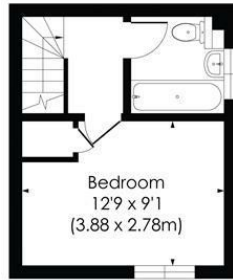
LANDSEER CLOSE, SW19

Approx. Gross Internal Floor Area

399 Sq. ft/37.06 Sq. m



GROUND FLOOR



FIRST FLOOR



© Pixangle Property Marketing Ltd. info@pixangle.com Tel: 0208 870 2118
 This floor plan has been prepared for the purpose of illustration only in accordance with the latest RICS code of measuring practice and is not to scale. All measurements and areas are approximate and whilst every effort has been made to ensure the accuracy of the plan contained here, no responsibility is taken for any error, omission or misstatement.

- One Bedroom House
- Freehold
- No Onward Chain
- Private Garden
- Ideal First Time Purchase
- Well Presented
- EPC Rating : D
- Merton Council Tax Band : C

Energy Efficiency Rating		Current	Potential
Very energy efficient - lower running costs			
(92 plus) A			89
(81-91) B			
(69-80) C			
(55-68) D		58	
(39-54) E			
(21-38) F			
(1-20) G			
Not energy efficient - higher running costs			
England & Wales		EU Directive 2002/91/EC	

For Free Mortgage Quote and Best Mortgage Rates, call an Ellisons Mortgage Advisor on 020 8544 0518



Although these particulars are believed to be correct, their accuracy is not guaranteed and they do not form part of any contract.

Celebrating 30 years of successful Sales and Lettings in Merton

